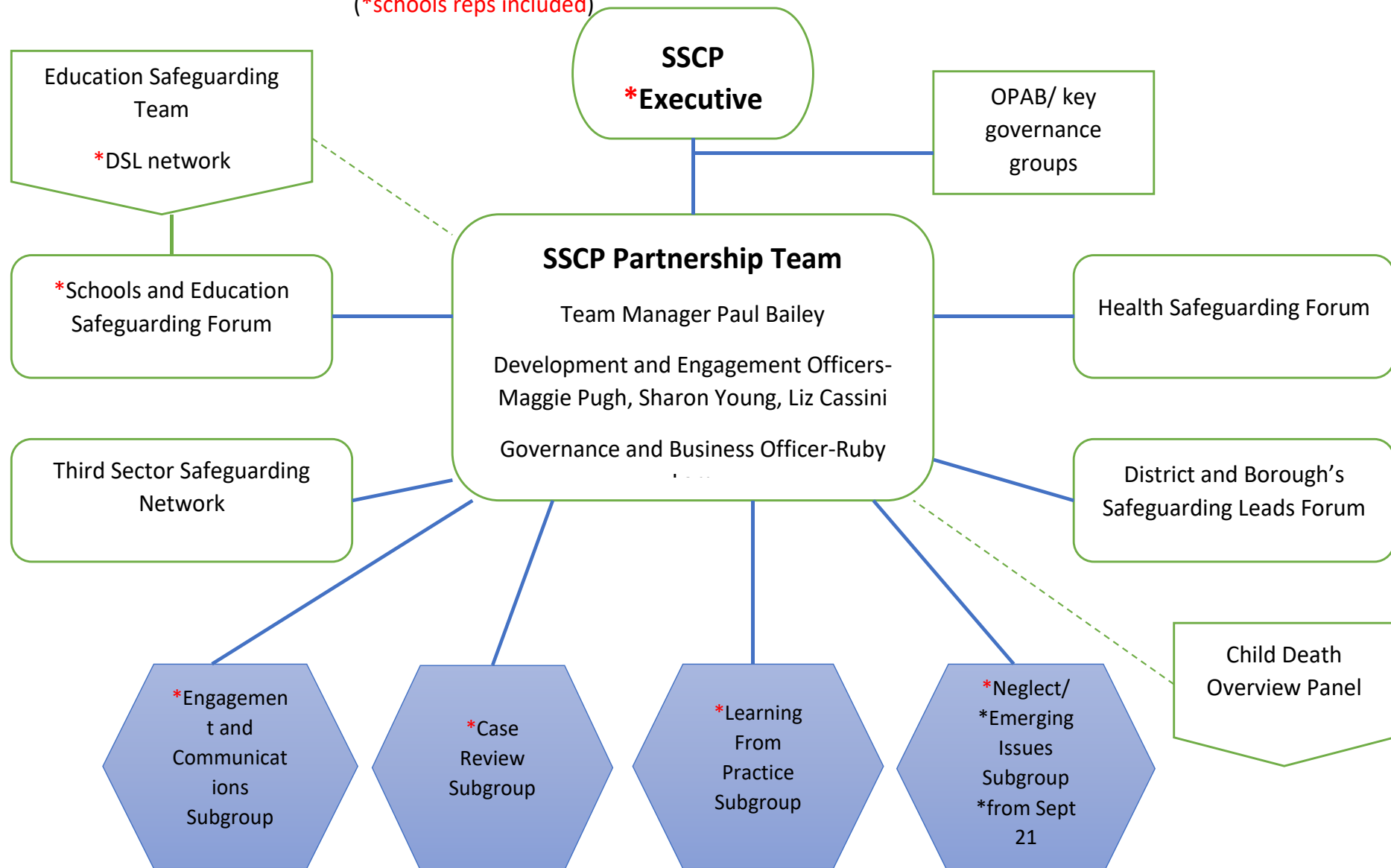


SSCP Overview for Schools and Education Settings

(*schools reps included)



Safeguarding children is everybody's business. All services need to jointly 'own' their safeguarding responsibilities, work collaboratively and in integrated ways to achieve better outcomes for children.

The Surrey Safeguarding Childrens Partnership was established in 2019 and is led, jointly and equally, by Surrey County Council, Surrey Police and Guildford and Waverley Clinical Commissioning Group (on behalf of all Surrey wide CCGs and NHS providers). The Statutory Safeguarding Partners work together with a broader set of relevant partner agencies and stakeholders in safeguarding and promoting the welfare of local children. Relevant partner agencies include all early years settings and schools- Academies, Free Schools and Independent Schools- colleges and other education providers in the SSCP area.

The SSCP Partnership Team supports the development and strengthening of partnership practice in safeguarding across the county, coordinating strategic planning and priorities that-for 2021-23- include a focus on Neglect, Thresholds and Adolescent Resilience. The Team also ensure the efficient operation of the Executive, the Partnership and Sub-groups/ Fora and provide capacity to co-ordinate and support specific workstreams, task and finish groups, the Section 11 audit process and practice reviews. The Team also has a key role in implementing the Partnership's communications strategy through bulletins and newsletters and will lead the production of the Partnership's annual report. Partnership representatives attend a quarterly meeting to share safeguarding updates.

Schools and Education Safeguarding Forum is made up of representatives of the county's schools and colleges and the county council's education and social care services. Its key purpose is to provide a forum for communication and for learning and improvement for professional staff in respect of the safeguarding of children in education settings. The group will lead actions and initiatives arising from the Partnership's priorities and plans; will identify issues of concern and will provide an education perspective in the Partnership's safeguarding arrangements. The group will meet quarterly and will be chaired by the Assistant Director for Education.

Schools representatives sit on the SSCP Sub-groups, the SSCP Executive and attend the SSCP Partnership meetings. Their role is to provide insight and experience from an education perspective, share good practice/learning and contribute towards the work to keep our children, young people and families safe.

Any queries please contact: partnership.team@surreycc.gov.uk or visit our website: [Surrey Safeguarding Children Partnership \(surreyscp.org.uk\)](http://Surrey Safeguarding Children Partnership (surreyscp.org.uk))